



Matthew G. Bevin
Governor

**COMMONWEALTH OF KENTUCKY
TRANSPORTATION CABINET**
Frankfort, Kentucky 40622
www.transportation.ky.gov/

Greg Thomas
Secretary

February 20, 2018

CALL NO. 201
CONTRACT ID NO. 184003
ADDENDUM # 2

Subject: SIMPSON COUNTY, 107GR18T002-HSIP & FD05
Letting February 23, 2018

- (1) Revised - Material Summary - Pages 90-91 of 234
- (2) Revised - General Summary - Page 95 of 234
- (3) Revised - Plan Sheet - Page 134 of 234
- (4) Revised - Pipe Sheet - Page 144 of 234
- (5) Revised - Proposal Bid Items - Pages 233-234 of 234
- (6) Added - Special Notes - Pages 1-7 of 7

Proposal revisions are available at <http://transportation.ky.gov/Construction-Procurement/>.

If you have any questions, please contact us at 502-564-3500.

Sincerely,

A handwritten signature in black ink that reads "Rachel Mills".

Rachel Mills, P.E.
Director
Division of Construction Procurement

RM:mr
Enclosures



An Equal Opportunity Employer M/F/D

MATERIAL SUMMARY

CONTRACT ID: 184003

107GR18T002-HSIP & FD05

0310701001801

RUSSELLVILLE RD (KY 100) SAFETY IMPROVEMENTS ON KY 100 FROM LOGAN COUNTY LINE TO APPRX 930 FT FROM HATTER LN ASPHALT SURFACE WITH GRADE & DRAIN, A DISTANCE OF 8.1 MILES.

Project Line No	Bid Code	DESCRIPTION	Quantity	Unit
0090	02569	DEMOBILIZATION	1.00	LS
0095	00003	CRUSHED STONE BASE	4,886.00	TON
0100	00020	TRAFFIC BOUND BASE	12.00	TON
0105	00080	CRUSHED AGGREGATE SIZE NO 23	350.00	TON
0110	00100	ASPHALT SEAL AGGREGATE	137.00	TON
0115	00103	ASPHALT SEAL COAT	15.70	TON
0120	00190	LEVELING & WEDGING PG64-22	1,412.00	TON
0125	00212	CL2 ASPH BASE 1.00D PG64-22	3,477.00	TON
0130	00440	ENTRANCE PIPE-15 IN	258.00	LF
0135	00462	CULVERT PIPE-18 IN	388.00	LF
0140	00464	CULVERT PIPE-24 IN	108.00	LF
0145	01373	METAL END SECTION TY 1-24 IN	2.00	EACH
0150	01374	METAL END SECTION TY 1-30 IN	2.00	EACH
0155	01490	DROP BOX INLET TYPE 1	1.00	EACH
0160	01496	DROP BOX INLET TYPE 3	1.00	EACH
0165	01584	CAP DROP BOX INLET - (DRY WELL)	1.00	EACH
0170	01728	SAFETY BOX INLET-18 IN DBL SDB-5	8.00	EACH
0175	02200	ROADWAY EXCAVATION	4,298.00	CUYD
0180	02483	CHANNEL LINING CLASS II	100.00	TON
0185	02562	TEMPORARY SIGNS	150.00	SQFT
0190	02575	DITCHING AND SHOULDERING	5,450.00	LF
0195	21289ED	LONGITUDINAL EDGE KEY	10,500.00	LF
0200	02599	FABRIC-GEOTEXTILE TYPE IV	512.00	SQYD
0205	02650	MAINTAIN & CONTROL TRAFFIC - SIMPSON KY 100 (HSIP)	1.00	LS
0210	02701	TEMP SILT FENCE	2,725.00	LF
0215	02703	SILT TRAP TYPE A	8.00	EACH
0220	02707	CLEAN SILT TRAP TYPE B	8.00	EACH
0225	02708	CLEAN SILT TRAP TYPE C	8.00	EACH
0230	02706	CLEAN SILT TRAP TYPE A	8.00	EACH
0235	02704	SILT TRAP TYPE B	8.00	EACH
0240	02705	SILT TRAP TYPE C	8.00	EACH
0245	02726	STAKING - SIMPSON KY 100 (HSIP)	1.00	LS
0250	05950	EROSION CONTROL BLANKET	4,744.00	SQYD
0255	06406	SBM ALUM SHEET SIGNS .080 IN	54.00	SQFT
0260	06410	STEEL POST TYPE 1	85.00	LF
0265	06510	PAVE STRIPING-TEMP PAINT-4 IN	20,920.00	LF
0270	10020NS	FUEL ADJUSTMENT	7,610.00	DOLL
0275	10030NS	ASPHALT ADJUSTMENT	19,114.00	DOLL
0280	20418ED	REMOVE & RELOCATE SIGNS	12.00	EACH
0285	21373ND	REMOVE SIGN	21.00	EACH
0290	23822EC	CORED HOLE DRAINAGE BOX CON-15 IN	1.00	EACH
0295	24631EC	BARCODE SIGN INVENTORY	44.00	EACH

MATERIAL SUMMARY

Project Line No	Bid Code	DESCRIPTION	Quantity	Unit
0300	24575ES610	HEADWALL - (SLOPED & MITERED CONCRETE-FOR 18 INCH PIPE)	11.00	EACH
0305	24575ES610	HEADWALL - (SLOPED & MITERED CONCRETE-FOR DBL 24 INCH PIPE)	2.00	EACH
0310	00356	ASPHALT MATERIAL FOR TACK	11.00	TON
0315	21655EN	REMOVE ASBESTOS PIPE	1,190.00	LF
0320	00466	CULVERT PIPE-30 IN	8.00	LF
0325	01310	REMOVE PIPE	470.00	LF
0330	05963	INITIAL FERTILIZER	.25	TON
0335	05964	20-10-10 FERTILIZER	.42	TON
0340	05992	AGRICULTURAL LIMESTONE	5.00	TON
0345	02220	FLOWABLE FILL - (ADDED: 2-20-18)	100.00	CUYD

CONTRACT ID: 184003

107GR18T002-HSIP & FD05

MP10701001801

RUSSELLVILLE ROAD (KY 100) FROM 0.371 MILES EAST OF HAROLD JERNIGAN ROAD EXTENDING EAST TO KY 1008 ASPHALT RESURFACING, A DISTANCE OF 6.79 MILES.

Project Line No	Bid Code	DESCRIPTION	Quantity	Unit
0005	02562	TEMPORARY SIGNS	310.00	SQFT
0010	02650	MAINTAIN & CONTROL TRAFFIC - (FD05)	1.00	LS
0015	00301	CL2 ASPH SURF 0.38D PG64-22	5,480.00	TON
0020	00190	LEVELING & WEDGING PG64-22	1,487.00	TON
0025	02676	MOBILIZATION FOR MILL & TEXT - (FD05)	1.00	LS
0030	02677	ASPHALT PAVE MILLING & TEXTURING	30.00	TON
0035	03240	BASE FAILURE REPAIR	2,010.00	SQYD
0040	06514	PAVE STRIPING-PERM PAINT-4 IN	136,154.00	LF
0045	06510	PAVE STRIPING-TEMP PAINT-4 IN	71,660.00	LF
0050	06568	PAVE MARKING-THERMO STOP BAR-24IN	139.00	LF
0055	02697	EDGELINE RUMBLE STRIPS	67,320.00	LF
0060	00001	DGA BASE	1,018.00	TON
0065	06600	REMOVE PAVEMENT MARKER TYPE V	896.00	EACH
0070	10020NS	FUEL ADJUSTMENT	11,358.00	DOLL
0075	10030NS	ASPHALT ADJUSTMENT	28,528.00	DOLL
0080	02569	DEMOBILIZATION	1.00	LS
0085	00356	ASPHALT MATERIAL FOR TACK	42.00	TON

STA. TO STA.	TYPE	LENGTH
352+00 - 353+00	EOP TAPER	100'

STA. TO STA.	TYPE	LENGTH
340+00 - 343+00	EOP TAPER	153'
341+3.21 - 349+26.21	EOP TAPER	153'
352+00 - 353+00	EOP TAPER	100'

NOTE: ALL SIGNS SHOWN ARE EXISTING UNLESS OTHERWISE NOTED.

SCALE 1"=100'

PLAN SHEET
KY 100 - SPOT IMPROVEMENT #4
STA. 340+00 - STA. 353+00

LA	BEARING	DISTANCE
A	N77°17'00"W	865.59'
B	ANC L = 244.48'	
	CHORD = 887.83237'	
C	N76°27'46"E	481.77'
D	S77°25'31"W	302.8248'
E	ANC R = 625.9'	
	CHORD = 874.95308'	
F	S76°58'47"E	367.9'
G	N76°27'46"E	207.16'

GENE THOMPSON
DB WB0 PG 449

ENGLAND FARMS INC
DB 134 PG 638

CONST. DBI PAPER 1
INSTALL 15" PIPE TO EXIST. DRY WELL.
REMOVE EX. 8" DRAIN PIPE AND COVERING
EXIST. DRY WELL WITH CRUSHED AGGREGATE
NO. 2 AND FLOWABLE FILL AS DIRECTED
BY ENGINEER.

KY 100
P.I. STA. 343+90.23
Δ = 233.42'
L = 430.82'
R = 1060.00'
E = 22.27'
E₁ = 6.02'
E₂ = 16.25'
FINOFT = 153'
RINDOUT = 87'
CURVE WIDENING = 2.5'

P.I. STA. 354+41.10
Δ = 277.0638 6398T
L = 144.66'
L = 285.90'
E = 60.90'
E = 11.19'

EDGE KEY
20 L.F.

SPOT IMPROV #4
END CONST.
STA. 353+00.00

MP 6.5
MP 6.6
MP 6.7

PROPOSED SIGN
REMOVE SIGN
REMOVE SIGN
REMOVE SIGN

EXIST. R/W
PROPOSED R/W
WATERWAY

PC 343+90.23
PT 345+60.81
PT 347+73.21
PC 352+96.44
PT 354+41.10

PROPOSED SIGN
REMOVE SIGN
REMOVE SIGN
REMOVE SIGN

EXIST. R/W
PROPOSED R/W
WATERWAY

EDGE KEY
20 L.F.

SPOT IMPROV #4
END CONST.
STA. 353+00.00

MP 6.5
MP 6.6
MP 6.7

PROPOSED SIGN
REMOVE SIGN
REMOVE SIGN
REMOVE SIGN

EXIST. R/W
PROPOSED R/W
WATERWAY

PC 343+90.23
PT 345+60.81
PT 347+73.21
PC 352+96.44
PT 354+41.10

PROPOSED SIGN
REMOVE SIGN
REMOVE SIGN
REMOVE SIGN

EXIST. R/W
PROPOSED R/W
WATERWAY

EDGE KEY
20 L.F.

SPOT IMPROV #4
END CONST.
STA. 353+00.00

MP 6.5
MP 6.6
MP 6.7

PROPOSED SIGN
REMOVE SIGN
REMOVE SIGN
REMOVE SIGN

EXIST. R/W
PROPOSED R/W
WATERWAY

PC 343+90.23
PT 345+60.81
PT 347+73.21
PC 352+96.44
PT 354+41.10

PROPOSED SIGN
REMOVE SIGN
REMOVE SIGN
REMOVE SIGN

EXIST. R/W
PROPOSED R/W
WATERWAY

EDGE KEY
20 L.F.

SPOT IMPROV #4
END CONST.
STA. 353+00.00

MP 6.5
MP 6.6
MP 6.7

PROPOSED SIGN
REMOVE SIGN
REMOVE SIGN
REMOVE SIGN

EXIST. R/W
PROPOSED R/W
WATERWAY

PC 343+90.23
PT 345+60.81
PT 347+73.21
PC 352+96.44
PT 354+41.10

PROPOSED SIGN
REMOVE SIGN
REMOVE SIGN
REMOVE SIGN

EXIST. R/W
PROPOSED R/W
WATERWAY

EDGE KEY
20 L.F.

SPOT IMPROV #4
END CONST.
STA. 353+00.00

MP 6.5
MP 6.6
MP 6.7

PROPOSED SIGN
REMOVE SIGN
REMOVE SIGN
REMOVE SIGN

EXIST. R/W
PROPOSED R/W
WATERWAY

PC 343+90.23
PT 345+60.81
PT 347+73.21
PC 352+96.44
PT 354+41.10

PROPOSED SIGN
REMOVE SIGN
REMOVE SIGN
REMOVE SIGN

EXIST. R/W
PROPOSED R/W
WATERWAY

EDGE KEY
20 L.F.

SPOT IMPROV #4
END CONST.
STA. 353+00.00

MP 6.5
MP 6.6
MP 6.7

PROPOSED SIGN
REMOVE SIGN
REMOVE SIGN
REMOVE SIGN

EXIST. R/W
PROPOSED R/W
WATERWAY

PC 343+90.23
PT 345+60.81
PT 347+73.21
PC 352+96.44
PT 354+41.10

PROPOSED SIGN
REMOVE SIGN
REMOVE SIGN
REMOVE SIGN

EXIST. R/W
PROPOSED R/W
WATERWAY

EDGE KEY
20 L.F.

SPOT IMPROV #4
END CONST.
STA. 353+00.00

MP 6.5
MP 6.6
MP 6.7

PROPOSED SIGN
REMOVE SIGN
REMOVE SIGN
REMOVE SIGN

EXIST. R/W
PROPOSED R/W
WATERWAY

PC 343+90.23
PT 345+60.81
PT 347+73.21
PC 352+96.44
PT 354+41.10

PROPOSED SIGN
REMOVE SIGN
REMOVE SIGN
REMOVE SIGN

EXIST. R/W
PROPOSED R/W
WATERWAY

EDGE KEY
20 L.F.

SPOT IMPROV #4
END CONST.
STA. 353+00.00

MP 6.5
MP 6.6
MP 6.7

PROPOSED SIGN
REMOVE SIGN
REMOVE SIGN
REMOVE SIGN

EXIST. R/W
PROPOSED R/W
WATERWAY

PC 343+90.23
PT 345+60.81
PT 347+73.21
PC 352+96.44
PT 354+41.10

PROPOSED SIGN
REMOVE SIGN
REMOVE SIGN
REMOVE SIGN

EXIST. R/W
PROPOSED R/W
WATERWAY

EDGE KEY
20 L.F.

SPOT IMPROV #4
END CONST.
STA. 353+00.00

MP 6.5
MP 6.6
MP 6.7

PROPOSED SIGN
REMOVE SIGN
REMOVE SIGN
REMOVE SIGN

EXIST. R/W
PROPOSED R/W
WATERWAY

PC 343+90.23
PT 345+60.81
PT 347+73.21
PC 352+96.44
PT 354+41.10

PROPOSED SIGN
REMOVE SIGN
REMOVE SIGN
REMOVE SIGN

EXIST. R/W
PROPOSED R/W
WATERWAY

EDGE KEY
20 L.F.

SPOT IMPROV #4
END CONST.
STA. 353+00.00

MP 6.5
MP 6.6
MP 6.7

PROPOSED SIGN
REMOVE SIGN
REMOVE SIGN
REMOVE SIGN

EXIST. R/W
PROPOSED R/W
WATERWAY

PC 343+90.23
PT 345+60.81
PT 347+73.21
PC 352+96.44
PT 354+41.10

PROPOSED SIGN
REMOVE SIGN
REMOVE SIGN
REMOVE SIGN

EXIST. R/W
PROPOSED R/W
WATERWAY

EDGE KEY
20 L.F.

SPOT IMPROV #4
END CONST.
STA. 353+00.00

MP 6.5
MP 6.6
MP 6.7

PROPOSED SIGN
REMOVE SIGN
REMOVE SIGN
REMOVE SIGN

EXIST. R/W
PROPOSED R/W
WATERWAY

PC 343+90.23
PT 345+60.81
PT 347+73.21
PC 352+96.44
PT 354+41.10

PROPOSED SIGN
REMOVE SIGN
REMOVE SIGN
REMOVE SIGN

EXIST. R/W
PROPOSED R/W
WATERWAY

EDGE KEY
20 L.F.

SPOT IMPROV #4
END CONST.
STA. 353+00.00

MP 6.5
MP 6.6
MP 6.7

PROPOSED SIGN
REMOVE SIGN
REMOVE SIGN
REMOVE SIGN

EXIST. R/W
PROPOSED R/W
WATERWAY

PC 343+90.23
PT 345+60.81
PT 347+73.21
PC 352+96.44
PT 354+41.10

PROPOSED SIGN
REMOVE SIGN
REMOVE SIGN
REMOVE SIGN

EXIST. R/W
PROPOSED R/W
WATERWAY

EDGE KEY
20 L.F.

SPOT IMPROV #4
END CONST.
STA. 353+00.00

MP 6.5
MP 6.6
MP 6.7

PROPOSED SIGN
REMOVE SIGN
REMOVE SIGN
REMOVE SIGN

EXIST. R/W
PROPOSED R/W
WATERWAY

PC 343+90.23
PT 345+60.81
PT 347+73.21
PC 352+96.44
PT 354+41.10

PROPOSED SIGN
REMOVE SIGN
REMOVE SIGN
REMOVE SIGN

EXIST. R/W
PROPOSED R/W
WATERWAY

EDGE KEY
20 L.F.

SPOT IMPROV #4
END CONST.
STA. 353+00.00

MP 6.5
MP 6.6
MP 6.7

PROPOSED SIGN
REMOVE SIGN
REMOVE SIGN
REMOVE SIGN

EXIST. R/W
PROPOSED R/W
WATERWAY

PC 343+90.23
PT 345+60.81
PT 347+73.21
PC 352+96.44
PT 354+41.10

PROPOSED SIGN
REMOVE SIGN
REMOVE SIGN
REMOVE SIGN

EXIST. R/W
PROPOSED R/W
WATERWAY

EDGE KEY
20 L.F.

SPOT IMPROV #4
END CONST.
STA. 353+00.00

MP 6.5
MP 6.6
MP 6.7

PROPOSED SIGN
REMOVE SIGN
REMOVE SIGN
REMOVE SIGN

EXIST. R/W
PROPOSED R/W
WATERWAY

PC 343+90.23
PT 345+60.81
PT 347+73.21
PC 352+96.44
PT 354+41.10

PROPOSED SIGN
REMOVE SIGN
REMOVE SIGN
REMOVE SIGN

EXIST. R/W
PROPOSED R/W
WATERWAY

EDGE KEY
20 L.F.

SPOT IMPROV #4
END CONST.
STA. 353+00.00

MP 6.5
MP 6.6
MP 6.7

PROPOSED SIGN
REMOVE SIGN
REMOVE SIGN
REMOVE SIGN

EXIST. R/W
PROPOSED R/W
WATERWAY

PC 343+90.23
PT 345+60.81
PT 347+73.21
PC 352+96.44
PT 354+41.10

PROPOSED SIGN
REMOVE SIGN
REMOVE SIGN
REMOVE SIGN

EXIST. R/W
PROPOSED R/W
WATERWAY

EDGE KEY
20 L.F.

SPOT IMPROV #4
END CONST.
STA. 353+00.00

MP 6.5
MP 6.6
MP 6.7

PROPOSED SIGN
REMOVE SIGN
REMOVE SIGN
REMOVE SIGN

EXIST. R/W
PROPOSED R/W
WATERWAY

PC 343+90.23
PT 345+60.81
PT 347+73.21
PC 352+96.44
PT 354+41.10

PROPOSED SIGN
REMOVE SIGN
REMOVE SIGN
REMOVE SIGN

EXIST. R/W
PROPOSED R/W
WATERWAY

EDGE KEY
20 L.F.

SPOT IMPROV #4
END CONST.
STA. 353+00.00

MP 6.5
MP 6.6
MP 6.7

PROPOSED SIGN
REMOVE SIGN
REMOVE SIGN
REMOVE SIGN

EXIST. R/W
PROPOSED R/W
WATERWAY

PC 343+90.23
PT 345+60.81
PT 347+73.21
PC 352+96.44
PT 354+41.10

PROPOSED SIGN
REMOVE SIGN
REMOVE SIGN
REMOVE SIGN

EXIST. R/W
PROPOSED R/W
WATERWAY

EDGE KEY
20 L.F.

SPOT IMPROV #4
END CONST.
STA. 353+00.00

MP 6.5
MP 6.6
MP 6.7

PROPOSED SIGN
REMOVE SIGN
REMOVE SIGN
REMOVE SIGN

EXIST. R/W
PROPOSED R/W
WATERWAY

PC 343+90.23
PT 345+60.81
PT 347+73.21
PC 352+96.44
PT 354+41.10

PROPOSED SIGN
REMOVE SIGN
REMOVE SIGN
REMOVE SIGN

EXIST. R/W
PROPOSED R/W
WATERWAY

EDGE KEY
20 L.F.

SPOT IMPROV #4
END CONST.
STA. 353+00.00

MP 6.5
MP 6.6
MP 6.7

PROPOSED SIGN
REMOVE SIGN
REMOVE SIGN
REMOVE SIGN

EXIST. R/W
PROPOSED R/W
WATERWAY

PC 343+90.23
PT 345+60.81
PT 347+73.21
PC 352+96.44
PT 354+41.10

PROPOSED SIGN
REMOVE SIGN
REMOVE SIGN
REMOVE SIGN

EXIST. R/W
PROPOSED R/W
WATERWAY

EDGE KEY
20 L.F.

SPOT IMPROV #4
END CONST.
STA. 353+00.00

MP 6.5
MP 6.6
MP 6.7

PROPOSED SIGN
REMOVE SIGN
REMOVE SIGN
REMOVE SIGN

EXIST. R/W
PROPOSED R/W
WATERWAY

PC 343+90.23
PT 345+60.81
PT 347+73.21
PC 352+96.44
PT 354+41.10

PROPOSED SIGN
REMOVE SIGN
REMOVE SIGN
REMOVE SIGN

EXIST. R/W
PROPOSED R/W
WATERWAY

EDGE KEY
20 L.F.

SPOT IMPROV #4
END CONST.
STA. 353+00.00

MP 6.5
MP 6.6
MP 6.7

PROPOSED SIGN
REMOVE SIGN
REMOVE SIGN
REMOVE SIGN

EXIST. R/W
PROPOSED R/W
WATERWAY

PC 343+90.23
PT 345+60.81
PT 347+73.21
PC 352+96.44
PT 354+41.10

PROPOSED SIGN
REMOVE SIGN
REMOVE SIGN
REMOVE SIGN

EXIST. R/W
PROPOSED R/W
WATERWAY

EDGE KEY
20 L.F.

SPOT IMPROV #4
END CONST.
STA. 353+00.00

MP 6.5
MP 6.6
MP 6.7

PROPOSED SIGN
REMOVE SIGN
REMOVE SIGN
REMOVE SIGN

EXIST. R/W
PROPOSED R/W
WATERWAY

PC 343+90.23
PT 345

PROPOSAL BID ITEMS

184003

Report Date 2/20/18

Section: 0001 - ROADWAY

LINE	BID CODE	ALT	DESCRIPTION	QUANTITY	UNIT	UNIT PRIC	FP	AMOUNT
0010	00001		DGA BASE	1,018.00	TON		\$	
0020	00003		CRUSHED STONE BASE	4,886.00	TON		\$	
0030	00020		TRAFFIC BOUND BASE	12.00	TON		\$	
0040	00080		CRUSHED AGGREGATE SIZE NO 23	350.00	TON		\$	
0050	00100		ASPHALT SEAL AGGREGATE	137.00	TON		\$	
0060	00103		ASPHALT SEAL COAT	15.70	TON		\$	
0070	00190		LEVELING & WEDGING PG64-22	2,899.00	TON		\$	
0080	00212		CL2 ASPH BASE 1.00D PG64-22	3,477.00	TON		\$	
0090	00301		CL2 ASPH SURF 0.38D PG64-22	5,480.00	TON		\$	
0100	00356		ASPHALT MATERIAL FOR TACK	53.00	TON		\$	
0110	00440		ENTRANCE PIPE-15 IN	258.00	LF		\$	
0120	00462		CULVERT PIPE-18 IN	388.00	LF		\$	
0130	00464		CULVERT PIPE-24 IN	108.00	LF		\$	
0140	00466		CULVERT PIPE-30 IN	8.00	LF		\$	
0150	01310		REMOVE PIPE	470.00	LF		\$	
0160	01373		METAL END SECTION TY 1-24 IN	2.00	EACH		\$	
0170	01374		METAL END SECTION TY 1-30 IN	2.00	EACH		\$	
0180	01490		DROP BOX INLET TYPE 1	1.00	EACH		\$	
0190	01496		DROP BOX INLET TYPE 3	1.00	EACH		\$	
0200	01584		CAP DROP BOX INLET (DRY WELL)	1.00	EACH		\$	
0210	01728		SAFETY BOX INLET-18 IN DBL SDB-5	8.00	EACH		\$	
0220	02200		ROADWAY EXCAVATION	4,298.00	CUYD		\$	
0225	02220		FLOWABLE FILL (ADDED: 2-20-18)	100.00	CUYD		\$	
0230	02483		CHANNEL LINING CLASS II	100.00	TON		\$	
0240	02562		TEMPORARY SIGNS	460.00	SQFT		\$	
0250	02575		DITCHING AND SHOULDERING	5,450.00	LF		\$	
0260	02599		FABRIC-GEOTEXTILE TYPE IV	512.00	SQYD		\$	
0270	02650		MAINTAIN & CONTROL TRAFFIC SIMPSON KY 100 (HSIP)	1.00	LS		\$	
0280	02650		MAINTAIN & CONTROL TRAFFIC (FD05)	1.00	LS		\$	
0290	02676		MOBILIZATION FOR MILL & TEXT (FD05)	1.00	LS		\$	
0300	02677		ASPHALT PAVE MILLING & TEXTURING	30.00	TON		\$	
0310	02697		EDGE LINE RUMBLE STRIPS	67,320.00	LF		\$	
0320	02701		TEMP SILT FENCE	2,725.00	LF		\$	
0330	02703		SILT TRAP TYPE A	8.00	EACH		\$	
0340	02704		SILT TRAP TYPE B	8.00	EACH		\$	
0350	02705		SILT TRAP TYPE C	8.00	EACH		\$	
0360	02706		CLEAN SILT TRAP TYPE A	8.00	EACH		\$	
0370	02707		CLEAN SILT TRAP TYPE B	8.00	EACH		\$	
0380	02708		CLEAN SILT TRAP TYPE C	8.00	EACH		\$	
0390	02726		STAKING SIMPSON KY 100 (HSIP)	1.00	LS		\$	
0400	03240		BASE FAILURE REPAIR	2,010.00	SQYD		\$	
0410	05950		EROSION CONTROL BLANKET	4,744.00	SQYD		\$	
0420	05963		INITIAL FERTILIZER	.25	TON		\$	

PROPOSAL BID ITEMS

REVISED ADDENDUM #2: 2-20-18

184003

Page 2 of 2

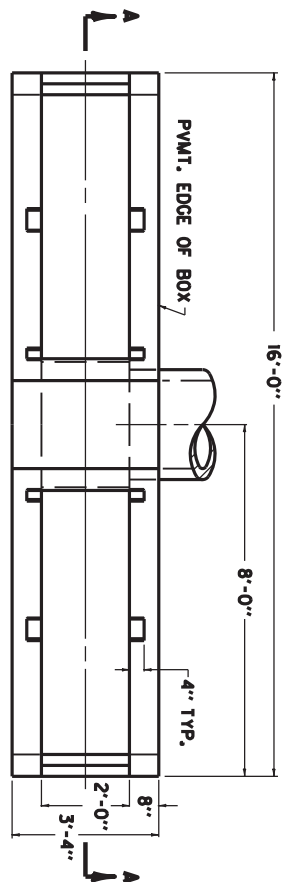
Report Date 2/20/18

LINE	BID CODE	ALT	DESCRIPTION	QUANTITY	UNIT	UNIT PRIC	FP	AMOUNT
0430	05964		20-10-10 FERTILIZER	.42	TON		\$	
0440	05992		AGRICULTURAL LIMESTONE	5.00	TON		\$	
0450	06406		SBM ALUM SHEET SIGNS .080 IN	54.00	SQFT		\$	
0460	06410		STEEL POST TYPE 1	85.00	LF		\$	
0470	06510		PAVE STRIPING-TEMP PAINT-4 IN	92,580.00	LF		\$	
0480	06514		PAVE STRIPING-PERM PAINT-4 IN	136,154.00	LF		\$	
0490	06568		PAVE MARKING-THERMO STOP BAR-24IN	139.00	LF		\$	
0500	06600		REMOVE PAVEMENT MARKER TYPE V	896.00	EACH		\$	
0510	10020NS		FUEL ADJUSTMENT	18,968.00	DOLL	\$1.00	\$	\$18,968.00
0520	10030NS		ASPHALT ADJUSTMENT	47,642.00	DOLL	\$1.00	\$	\$47,642.00
0530	20418ED		REMOVE & RELOCATE SIGNS	12.00	EACH		\$	
0540	21289ED		LONGITUDINAL EDGE KEY	10,500.00	LF		\$	
0550	21373ND		REMOVE SIGN	21.00	EACH		\$	
0560	21655EN		REMOVE ASBESTOS PIPE	1,190.00	LF		\$	
0570	23822EC		CORED HOLE DRAINAGE BOX CON-15 IN	1.00	EACH		\$	
0580	24575ES610		HEADWALL (SLOPED & MITERED CONCRETE-FOR 18 INCH PIPE)	11.00	EACH		\$	
0590	24575ES610		HEADWALL (SLOPED & MITERED CONCRETE-FOR DBL 24 INCH PIPE)	2.00	EACH		\$	
0600	24631EC		BARCODE SIGN INVENTORY	44.00	EACH		\$	

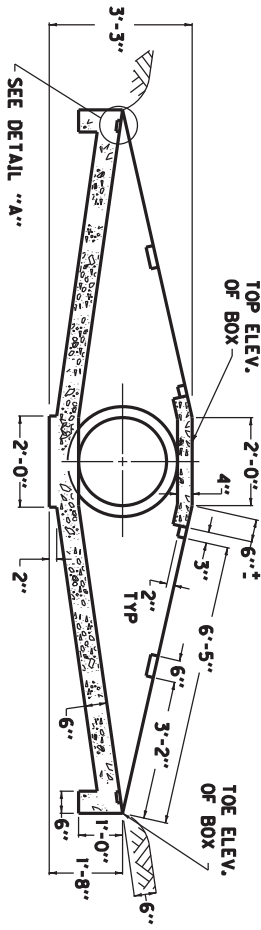
Section: 0002 - DEMOBILIZATION

LINE	BID CODE	ALT	DESCRIPTION	QUANTITY	UNIT	UNIT PRIC	FP	AMOUNT
0610	02569		DEMOBILIZATION	1.00	LS		\$	

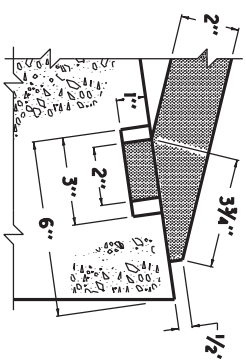
MicroStation v8.11.7.443 E-SHEET NAME: USER: Patrick.Stone DATE PLOTTED: September 24, 2013 FILE NAME: G:\USERS\PATRICK.STONE\APPDATA\LOCAL\MICROSOFT\WINDOWS\TEMPORARY INTERNET FILES\CONTENT.OUTLOOK\Y0843\NA\SAFETY BOX.DGN



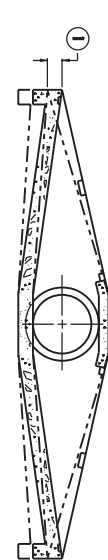
PLAN VIEW



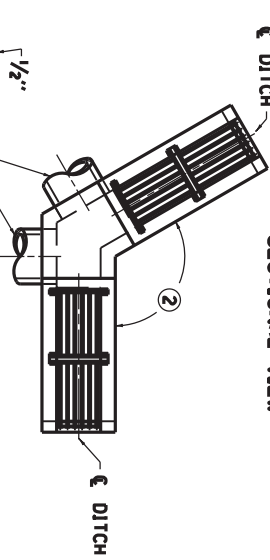
SECTION A-A



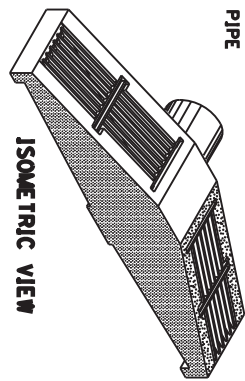
DETAIL "A"



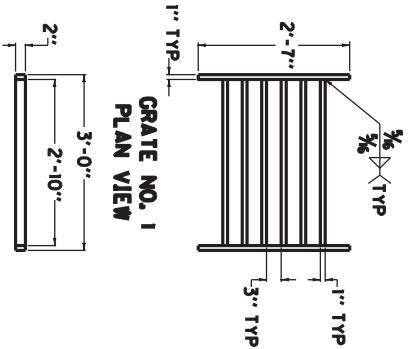
SECTIONAL VIEW



ALTERNATE PIPE LOCATIONS

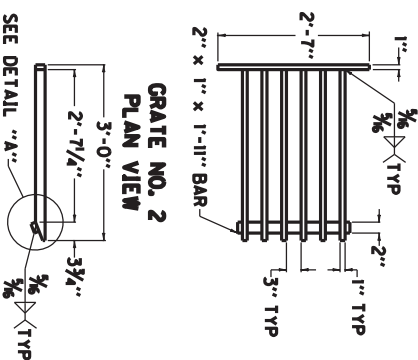


ISOMETRIC VIEW



GRATE NO. 1
PLAN VIEW

GRATE NO. 1
SIDE ELEVATION



GRATE NO. 2
PLAN VIEW

GRATE NO. 2
SIDE ELEVATION

APPROXIMATE QUANTITIES			
CLASS "A"	GRATE	LBS. STRUCTURAL STEEL	TOTAL POUNDS
CONC.	NUMBER	EACH GRATE	
2.07	1	145	
	2	153	596

M/A

DBL SAFETY BOX INLET DETAIL SHEET

NOTES

ITEM CODE BID ITEM UNIT

1728 SAFETY BOX INLET-18 IN DBL SDB-5 EACH

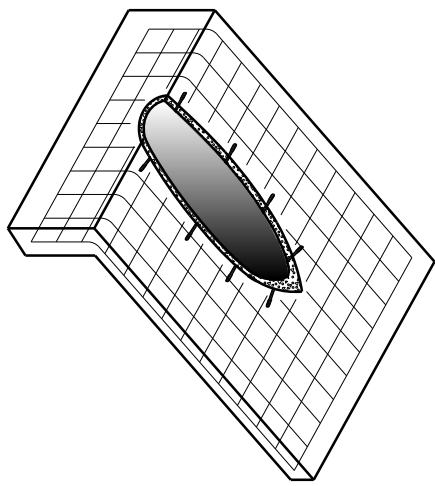
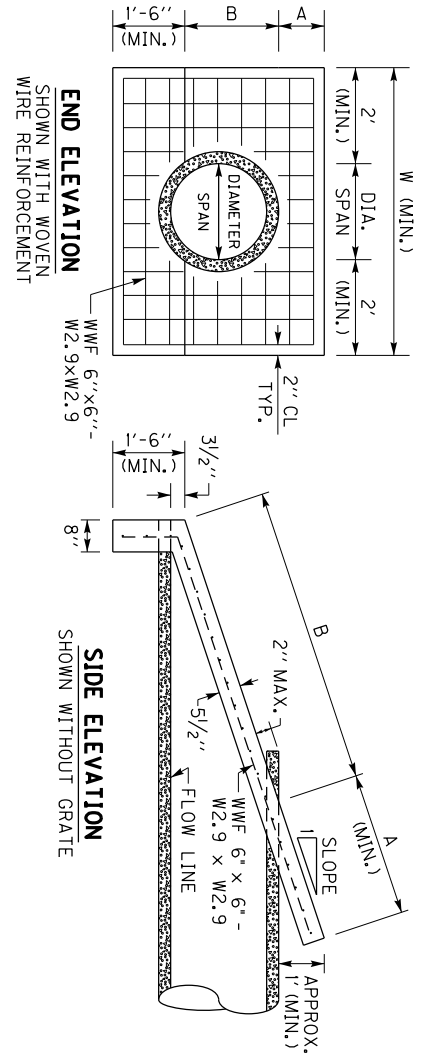
1729 SAFETY BOX INLET-24 IN DBL SDB-5 EACH

THE UNIT BID FOR EACH STRUCTURE SHALL INCLUDE ALL CONCRETE, STRUCTURAL STEEL GRATING, EXCAVATION, LABOR AND INCIDENTALS NECESSARY FOR ITS CONSTRUCTION AS DETAILED ON THIS SHEET.

1 TOE OF BOX SHALL BE RAISED OR LOWERED TO FIT EXISTING FIELD CONDITIONS.

2 ANGLE BETWEEN BOX WALLS MAY VARY TO FIT EXISTING FIELD CONDITIONS.

COUNTY OF	ITEM NO.	SHEET NO.
-----------	----------	-----------



ISOMETRIC VIEW
 SHOWN WITH WOVEN
 WIRE REINFORCEMENT
 AND WEDGE ANCHORS

DIMENSIONS AND CONCRETE QUANTITIES

PIPE SIZE	3:1 SLOPE			4:1 SLOPE			6:1 SLOPE			GRATE REQUIRED
	A	B	W	A	B	W	A	B	W	
15"	3'-7 1/2"	5'-3"	0.74	4'-8 3/4"	5'-3"	0.93	6'-11 3/4"	5'-3"	1.29	NO
18"	4'-5 3/4"	5'-6"	0.85	5'-10"	5'-6"	1.05	8'-7 1/4"	5'-6"	1.48	NO
24"	6'-2 1/2"	6'-0"	1.05	8'-1"	6'-0"	1.32	11'-11"	6'-0"	1.87	SEE ⑦
30"	7'-10 3/4"	6'-6"	1.43	10'-3 3/4"	6'-6"	1.80	15'-2 1/2"	6'-6"	2.28	SEE ⑦

NOTE: CONCRETE QUANTITIES ARE LISTED FOR INFORMATIONAL PURPOSES ONLY.

NOTES

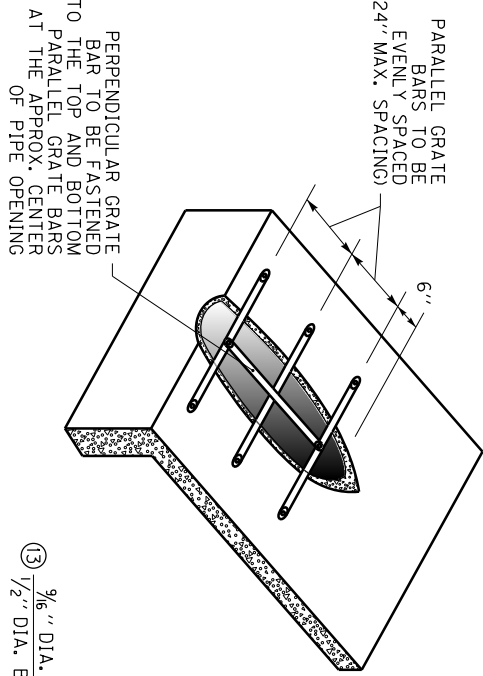
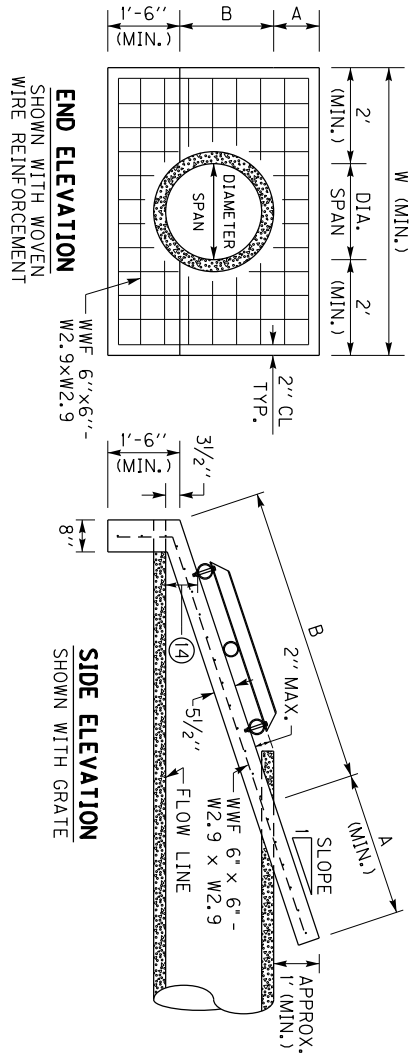
- BID ITEM AND UNIT TO BID: 24575ES610 HEADWALL (SLOPED & MITERED CONCRETE-FOR 1" INCH PIPE) - EACH AND GRADED AROUND THE PIPE BEFORE THE CONCRETE SLOPE PAVING IS PLACED. THE INTENT IS FOR THE SLOPED & MITERED HEADWALL TO MATCH THE FINAL EMBANKMENT SLOPE.
- THE PIPE SHALL BE MITERED AFTER THE CONCRETE SLOPE PAVING HAS BEEN PLACED AND SUFFICIENTLY CURED. THE PIPE SHOULD BE MITERED AS CLOSE TO FLUSH WITH THE SLOPE PAVING AS POSSIBLE, AND NO HIGHER THAN 2" ABOVE THE SLOPE PAVING. HAND FINISHING AND/OR CUTTING MAY BE NECESSARY.
- THE DIMENSION 'A' IS BASED ON THE FINAL GRADED SLOPE. THE DIMENSION 'B' IS BASED ON CIRCULAR REINFORCED CONCRETE PIPE AT 0° SKEW FOR THE LISTED SLOPE. THE DIMENSION 'W' IS BASED ON THE DIAMETER, OR SPAN, OF THE PIPE. NOTE: THE HEADWALL DIMENSIONS AND CONCRETE QUANTITIES MAY VARY BASED ON THE FINAL GRADED SLOPE, PIPE SKEW, AND/OR TYPE OF PIPE.
- WOVEN WIRE REINFORCEMENT (WWF 6"x6" - W2.9xW2.9) IS REQUIRED FOR THE SLOPE PAVING AND TOE WALL. UTILIZE 2" CLEARANCE FROM ALL EDGES.
- CONCRETE QUANTITIES SHOWN ARE FOR ONE (1) HEADWALL.
- AFTER THE PIPE HAS BEEN MITERED, ANCHOR THE PIPE TO THE CONCRETE SLOPE PAVING BY CORE DRILLING AND INSTALLING 1/2" DIAMETER x 7" LENGTH STEEL WEDGE ANCHORS (3" MINIMUM EMBEDMENT) ON 18" CENTERS ALONG THE SIDES OF THE PIPE. HOLE SIZE & DEPTH, TORQUE, & INSTALLATION PROCEDURES PER RECOMMENDATION OF ANCHOR MANUFACTURE. NOTE: STEEL WEDGE ANCHORS ARE NOT REQUIRED FOR REINFORCED CONCRETE PIPE.
- THE FOLLOWING SITUATIONS REQUIRE A HEADWALL WITH A GRATE:
 - 24" DIAMETER PIPE ON GREATER THAN 30° SKEW
 - 30" DIAMETER PIPE ON GREATER THAN 15° SKEW
 - PIPE WITH GREATER THAN 30" DIAMETER.
 - ELLIPTICAL PIPE GREATER THAN 24" EQUIVALENT DIAMETER
 SEE SHEET 2 FOR GRATE DETAILS
- ALL BOLTS AND HARDWARE SHALL BE RUST RESISTANT: ZINC PLATED, STAINLESS STEEL, OR STEEL THAT HAS BEEN GALVANIZED IN ACCORDANCE WITH AASHTO M 232.

NOT TO SCALE

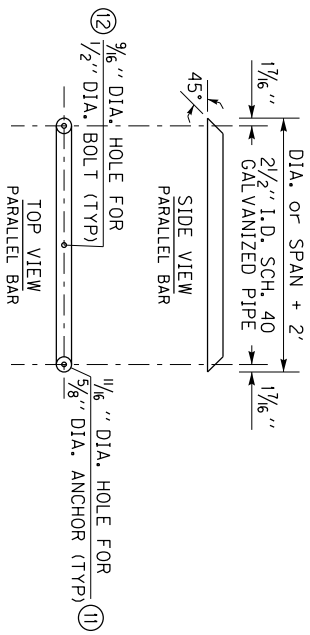
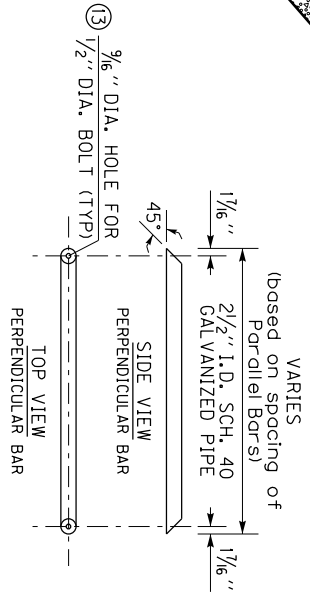
SEE SHEET 2 FOR DIMENSIONS OF PIPE HEADWALLS FOR PIPE OVER 30" DIAMETER

COUNTY OF	TOWN OF	SHEET NO.
-----------	---------	-----------

KENTUCKY
DEPARTMENT OF HIGHWAYS
SLOPED & MITERED CONCRETE HEADWALL (SHEET 1 OF 2)



ISOMETRIC VIEW
 SHOWING HEADWALL WITH GRATE



PIPE FOR GRATE DETAILS
 SEE NOTE 6 TO DETERMINE IF GRATE IS REQUIRED

DIMENSIONS AND CONCRETE QUANTITIES

PIPE SIZE	3:1 SLOPE		4:1 SLOPE		6:1 SLOPE		GRATE REQUIRED						
	A	B	W	CU. YDS. CONCRETE	A	B		W	CU. YDS. CONCRETE	A	B	W	CU. YDS. CONCRETE
36"	3'	9'-7 1/2"	7'-0"	1.51	4'	12'-6 1/2"	7'-0"	1.91	6'	18'-6"	7'-0"	2.42	YES
42"	3'	11'-4"	7'-6"	1.76	4'	14'-9 1/4"	7'-6"	2.23	6'	21'-9 1/2"	7'-6"	3.19	YES

NOTE: CONCRETE QUANTITIES ARE LISTED FOR INFORMATIONAL PURPOSES ONLY.

NOTES

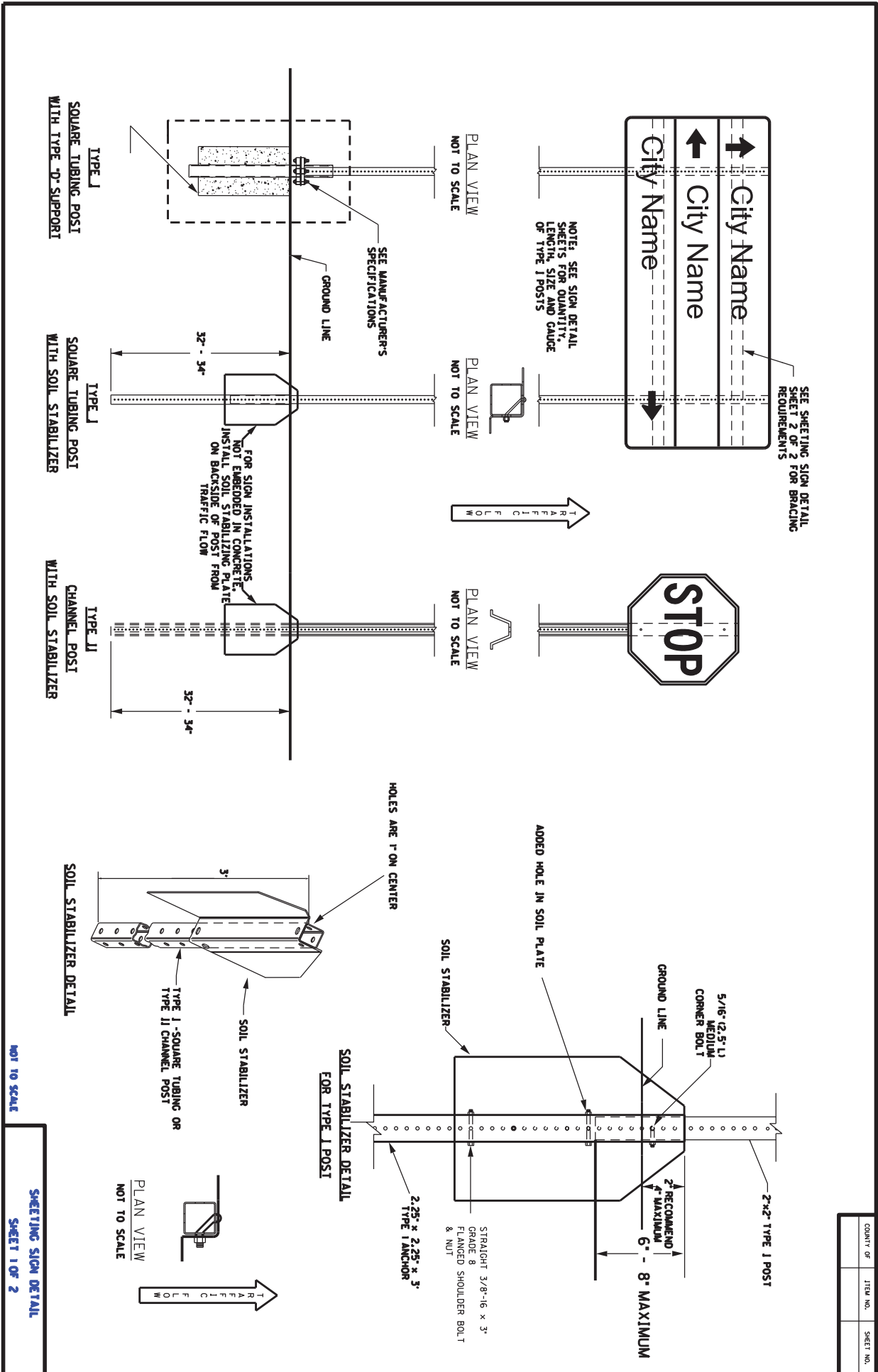
1. BID ITEM AND UNIT TO BID: 24575ES610 HEADWALL (SLOPED & MITERED CONCRETE-FOR 1 INCH PIPE) - EACH SEE SHEET 1 FOR NOTES 1 THRU 5
2. THE FOLLOWING SITUATIONS REQUIRE A HEADWALL WITH A GRATE:
 - 7. 24" DIAMETER PIPE ON GREATER THAN 30° SKEW
 - 8. 30" DIAMETER PIPE ON GREATER THAN 15° SKEW
 - 9. PIPE WITH GREATER THAN 30" DIAMETER
 - 10. ELLIPTICAL PIPE GREATER THAN 24" EQUIVALENT DIAMETER
3. ALL BOLTS AND HARDWARE SHALL BE RUST RESISTANT: ZINC PLATED, STAINLESS STEEL, OR STEEL THAT HAS BEEN GALVANIZED IN ACCORDANCE WITH AASHTO M 232.
4. THE PIPE USED TO CONSTRUCT THE GRATE SHALL BE STEEL, SCHEDULE 40, CONFORMING TO ASTM A53, AND GALVANIZED IN ACCORDANCE WITH AASHTO M 111 AFTER FABRICATION.
5. ANY RAW METAL EXPOSED BY FIELD CUTTING AND/OR DRILLING SHALL BE TREATED WITH A COLD GALVANIZING COMPOUND.
6. FASTEN PARALLEL BARS TO HEADWALL WITH 5/8" DIA. x 4 1/2" LENGTH STEEL WEDGE ANCHORS, MINIMUM EMBEDMENT = 2 3/4" HOLE SIZE AND DEPTH, TORQUE, & INSTALLATION PROCEDURES PER RECOMMENDATION OF ANCHOR MANUFACTURE
7. CENTER BOLT HOLE SHALL ONLY BE DRILLED IN THE TOP AND BOTTOM PARALLEL BARS.
8. FASTEN THE PERPENDICULAR BAR TO THE TOP AND BOTTOM PARALLEL BARS WITH 1/2" DIA. x 4" LENGTH HEX HEAD BOLTS, HEX HEAD NUTS, & FLAT WASHERS.
9. THE BOTTOM PARALLEL BAR IS TO BE PLACED SO THAT IT IS APPROX. 6" ABOVE THE FLOWLINE OF THE PIPE.

NOT TO SCALE

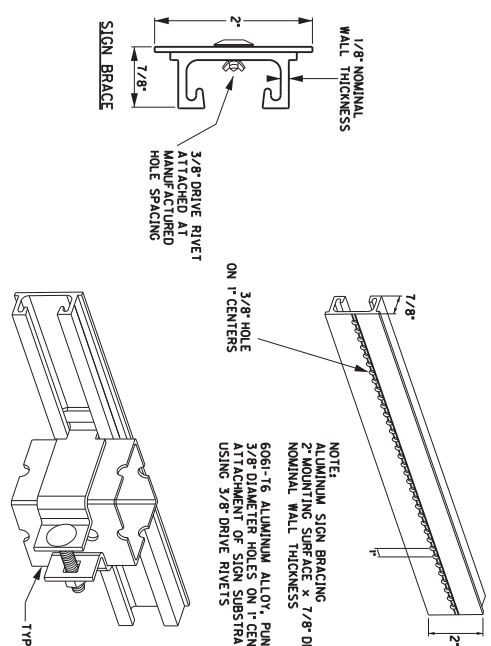
KENTUCKY
DEPARTMENT OF HIGHWAYS
 SLOPED & MITERED
 CONCRETE HEADWALL
 (SHEET 2 OF 2)

SEE SHEET 1 FOR
 DIMENSIONS OF
 HEADWALLS FOR PIPE
 30" DIAMETER & LESS

COUNTY OF	TOWN NO.	SHEET NO.
-----------	----------	-----------



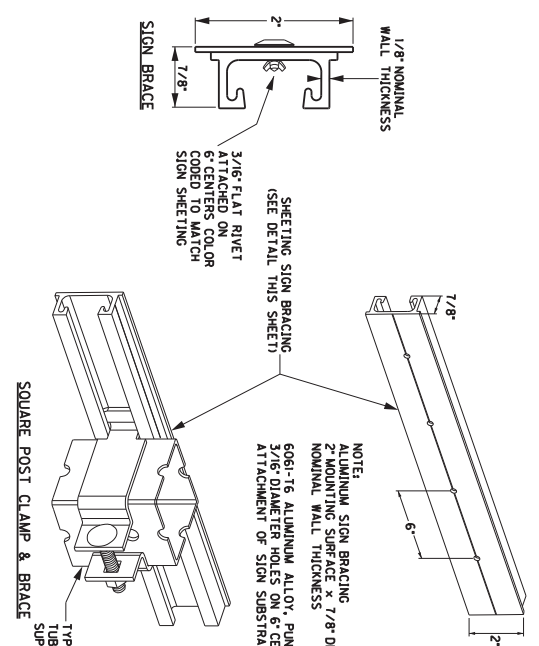
FOR ATTACHMENT OF SIGNS
LESS THAN 72" IN WIDTH
USING MANUFACTURED 3/8" HOLES
ACCORDING TO 2004 STANDARD
HIGHWAY SIGNS BLANK
STANDARDS
POS 7-1 THRU 7-6



NOTE:
ALUMINUM SIGN BRACING
2" MOUNTING SURFACE x 7/8" DEPTH x 1/8"
NOMINAL WALL THICKNESS
6061-T6 ALUMINUM ALLOY, PUNCHED WITH
3/8" DIAMETER HOLES ON 1" CENTERS FOR
ATTACHMENT OF SIGN SUBSTRATE
USING 3/8 DRIVE RIVETS

SQUARE POST CLAMP & BRACE

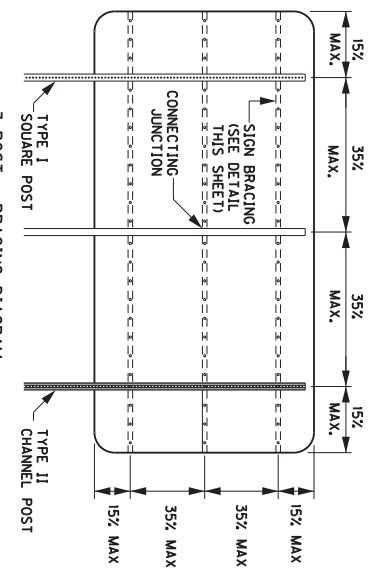
FOR ATTACHMENT OF SIGNS
GREATER THAN 72" IN WIDTH,
RIVETS SHALL BE COLOR CODED
TO MATCH SHEETING IN ORDER
TO MINIMIZE CLARE FROM RIVETS



NOTE:
ALUMINUM SIGN BRACING
2" MOUNTING SURFACE x 7/8" DEPTH x 1/8"
NOMINAL WALL THICKNESS
6061-T6 ALUMINUM ALLOY, PUNCHED WITH
3/16" DIAMETER HOLES ON 6" CENTERS FOR
ATTACHMENT OF SIGN SUBSTRATE USING RIVETS

SQUARE POST CLAMP & BRACE

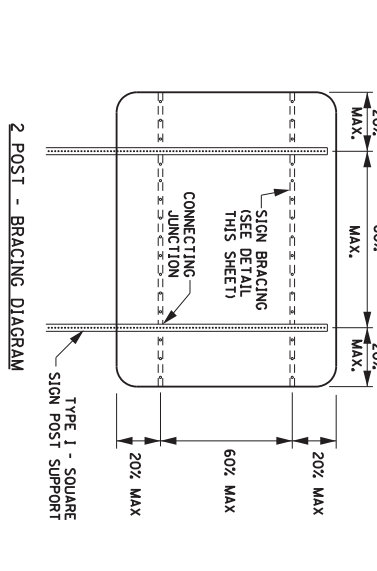
FOR ATTACHMENT OF SIGNS
GREATER THAN 72" IN WIDTH,
RIVETS SHALL BE COLOR CODED
TO MATCH SHEETING IN ORDER
TO MINIMIZE CLARE FROM RIVETS



3 POST - BRACING DIAGRAM

NOTE:
1. MAXIMUM AREA
PER CONNECTING
JUNCTION = 16 SQ. FT.

2. BRACING SHOULD NOT BE
SPLEDGED WITHIN 6' OF A BRACE
TO POST JUNCTION.



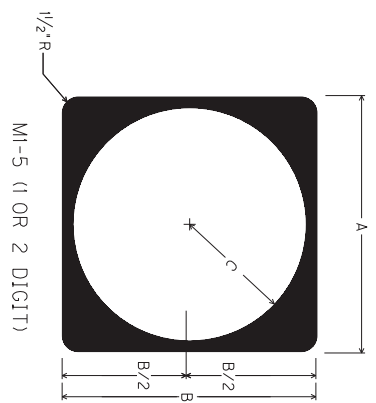
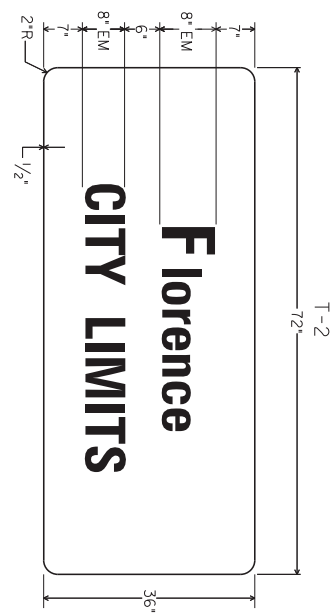
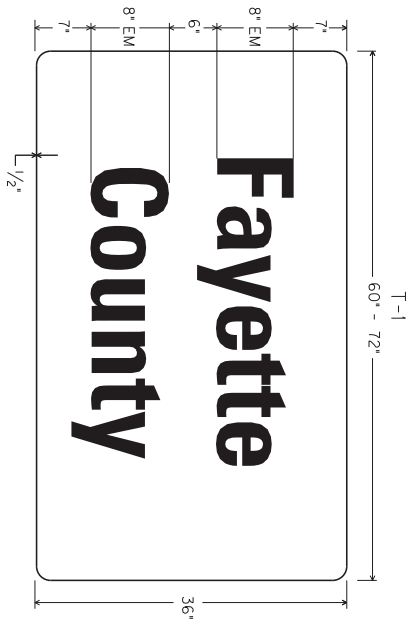
2 POST - BRACING DIAGRAM

NOTE:
USE OF SIGN BRACING NOT SHOWN ON THIS SHEET MAY BE PERMITTED
BY PROJECT ENGINEER AND/OR DISTRICT TRAFFIC ENGINEER.

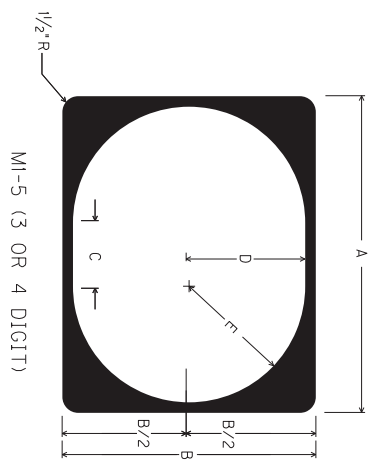
NOT TO SCALE
SHEETING SIGN DETAIL
SHEET 2 OF 2

COUNTY OF	ITEM NO.	SHEET NO.

COUNTY OF	ITEM NO.	SHEET NO.
-----------	----------	-----------



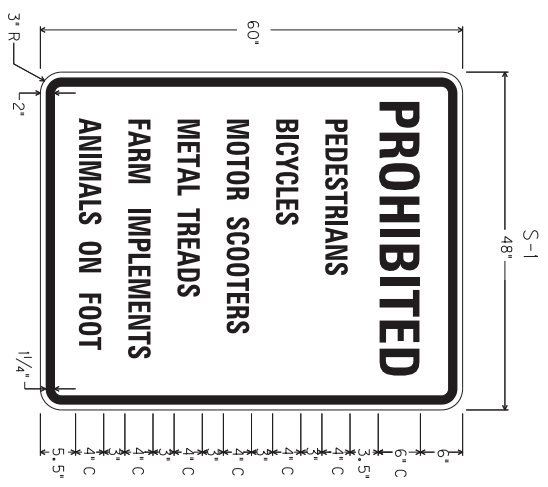
	A	B	C	FONT
CONVENTIONAL	24"	24"	11"	12D
EXPRESSWAY/ FREEWAY	36"	36"	17"	18D



	A	B	C	D	E	FONT
CONVENTIONAL	30"	24"	6"	11"	11"	12D
EXPRESSWAY/ FREEWAY	45"	36"	9"	16.5"	16.5"	18D

NOTE: FOR ROUTE MARKERS, IF NECESSARY, ADJUSTMENTS TO THE DIGIT LAYOUT AND/OR FONT TYPE MAY BE MADE TO ENSURE VISUAL ACUITY

NOTE: EXPRESSWAY/FREEWAY DEFINED AS A DIVIDED HIGHWAY WITH PARTIAL OR FULL CONTROL OF ACCESS



NOT TO SCALE

TYPICAL SIGNS